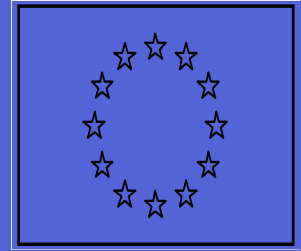


EUROPEAN COMMISSION
Mediterranean Regional Programme
For Local Water Management
Budget Line B7- 4100



MEDA - ISIIMM

**Institutional and Social innovations in
Irrigation Mediterranean Management**



***Chamber of Commerce, Industry and
Agriculture of Zahle – LEBANON***

Said GEDEON – National Coordinator

Objectives

- **Create water users association**
- **Enhance farmers to adopt water management concepts**

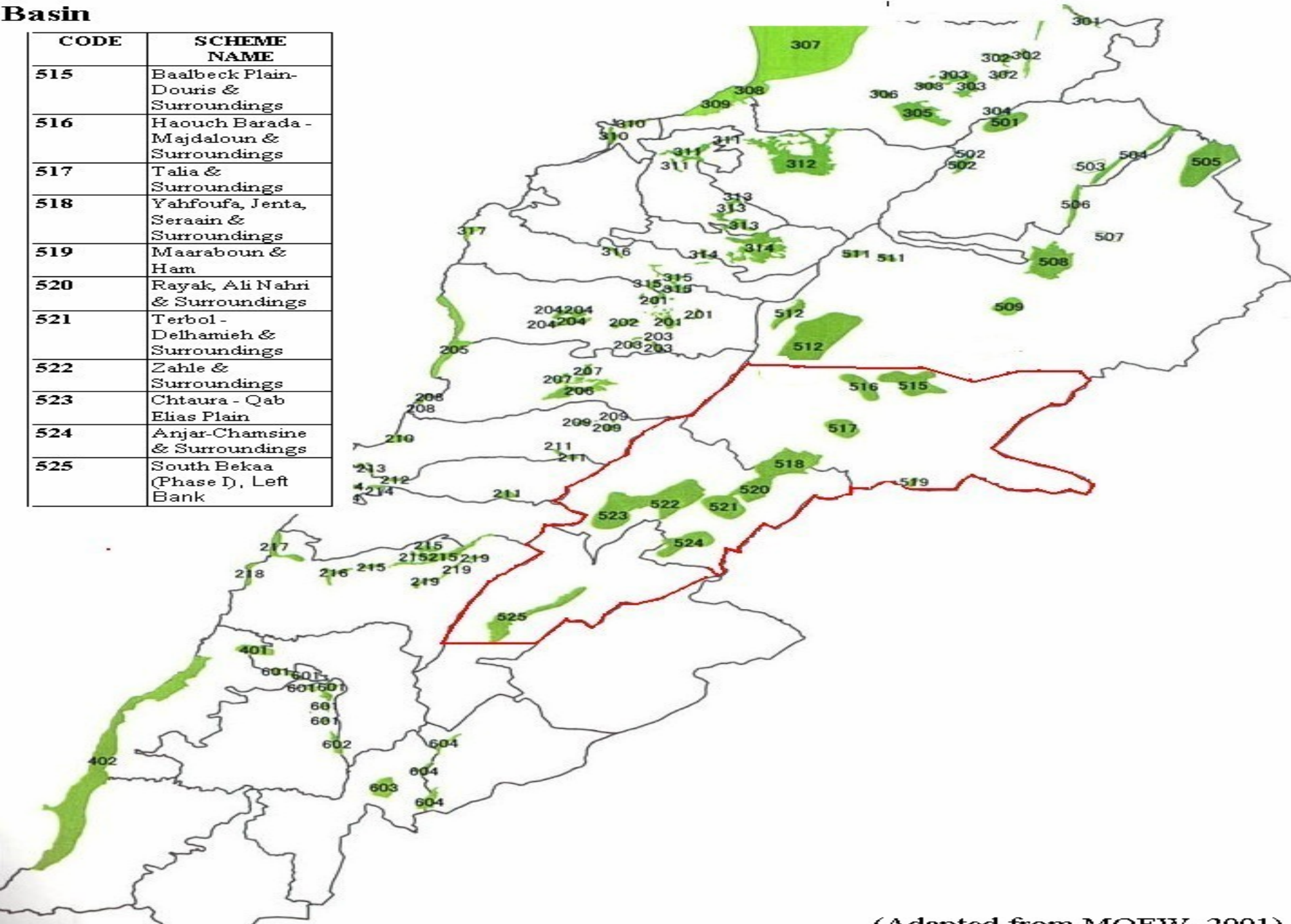


LEBANON: case study

- **BEKAA : 40% of Lebanon**
- **Litani High Basin: 40% of Bekaa Valley (1730 sqkm)**
- **Population: 500 000.**
- **Fertile soils – 800 mm of precipitation.**
- **Canal 900 (LRA) : 23 500 ha.**
- **Length: 35 Km.**
- **Phase 1 (2000 Ha): 14 Km length**
- **5 villages (Karaoun – Lala
Baaloul – Kamed el laouz
– Jeb janine)**

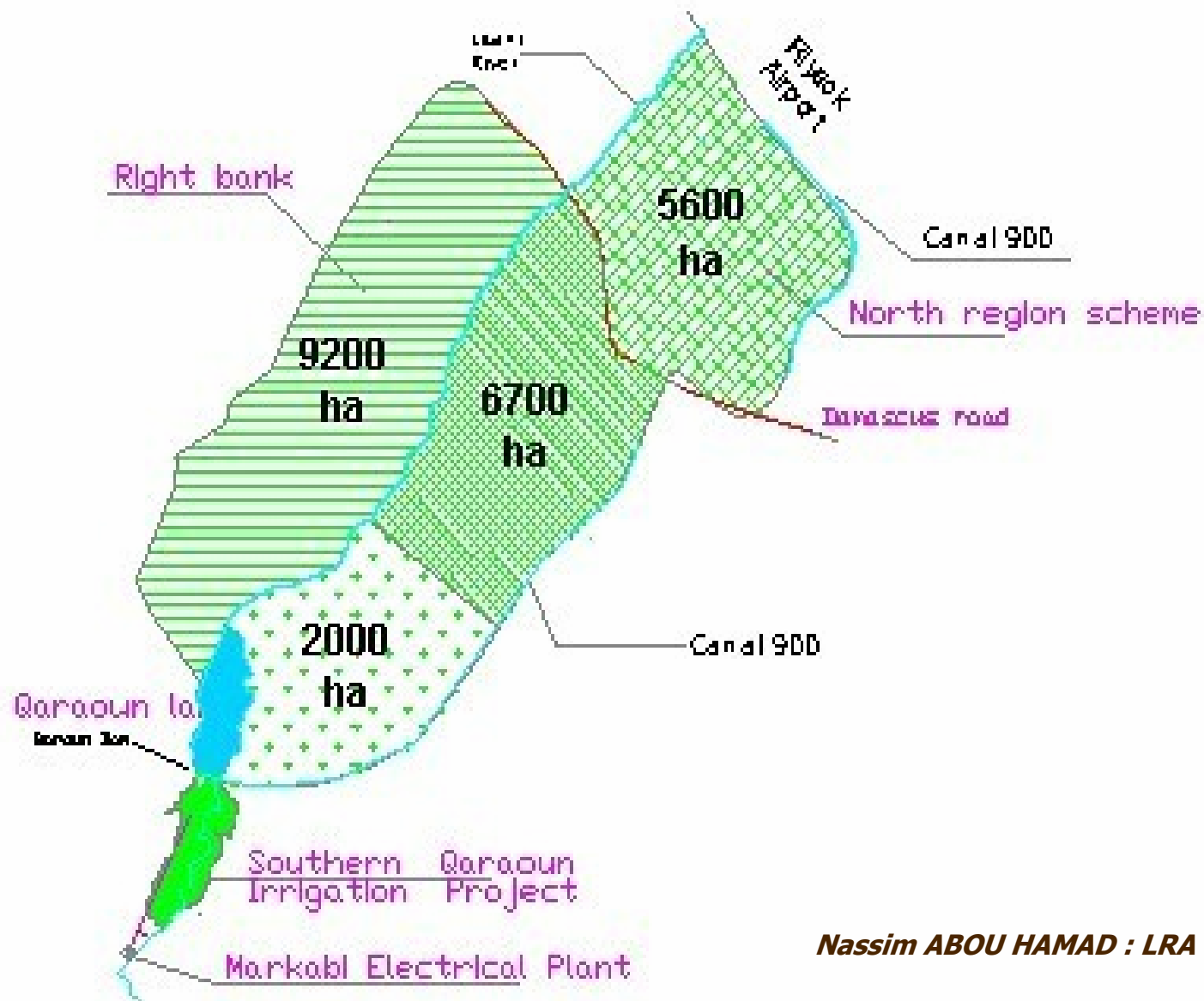
Figure 15: Schemed irrigation projects in Upper Litani Basin

CODE	SCHEME NAME
515	Baalbeck Plain-Douris & Surroundings
516	Haouch Barada - Majdaloun & Surroundings
517	Talia & Surroundings
518	Yahfoufa, Jenta, Seraain & Surroundings
519	Maaraboun & Ham
520	Rayak, Ali Nahri & Surroundings
521	Terbol - Delhamieh & Surroundings
522	Zahle & Surroundings
523	Chtaura - Qab Elias Plain
524	Anjar-Chamsine & Surroundings
525	South Bekaa (Phase D), Left Bank



(Adapted from MOEW, 2001)

Figure 8: SOUTH BEKAA IRRIGATION SCHEME (23 000 Ha)



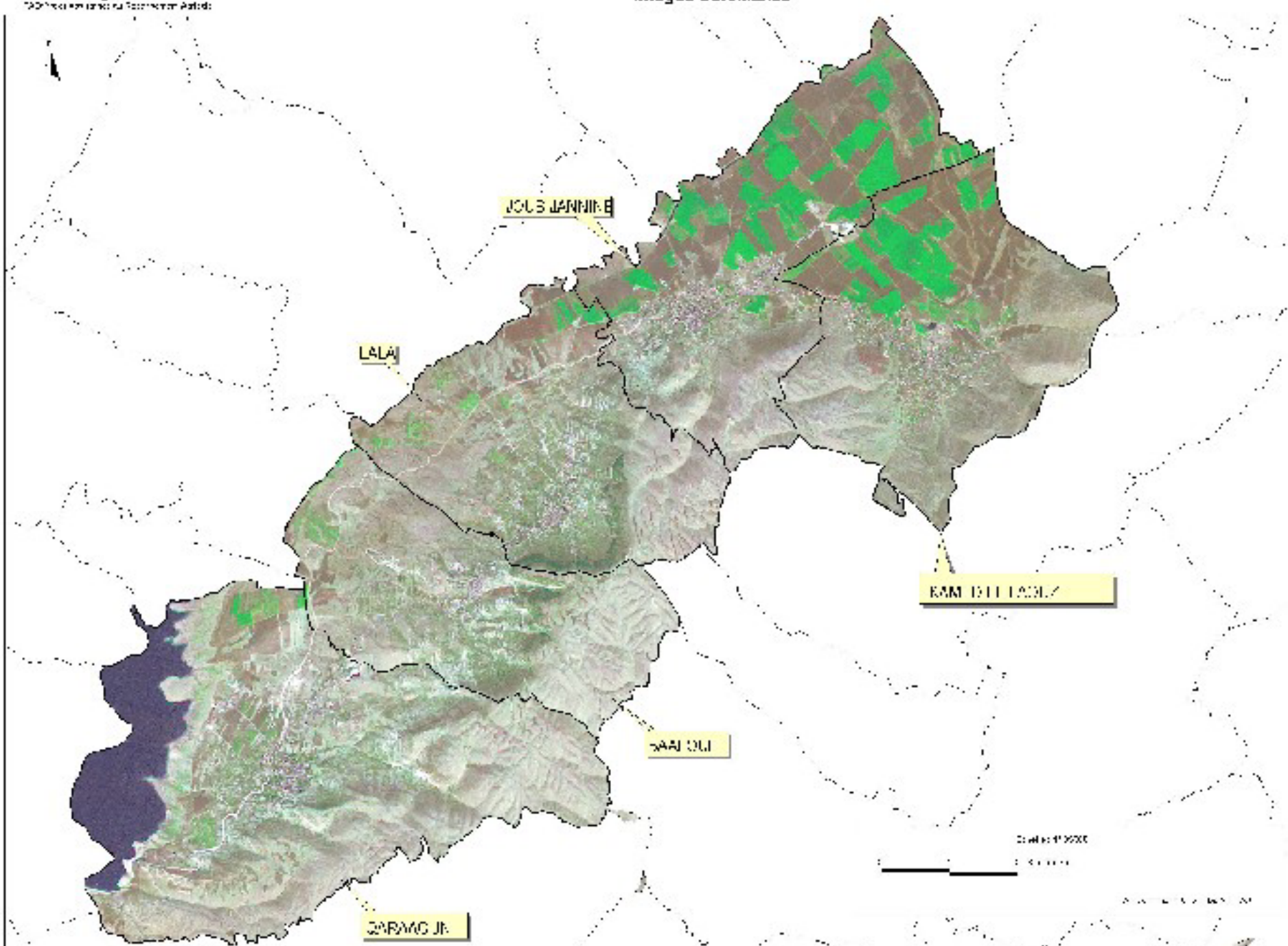
Nassim ABOU HAMAD : LRA 2004.



ISS004E12896



Immagi Satellitari



JOLIS JANNINE

LALA

KAM ELI LACHZ

SAAI OLI

SARFANG JR.

0 5 10 Kilometers

ISIIMM LEBANON

Team Work :

- **1 National Coordinator**
- **1 Facilitator**
- **1 Assistant**

COORDINATION

- ***Ministry of Agriculture***
- ***Litani River Authority (LRA)***
- ***Lebanese Agricultural Research Institute***
- ***WUA???***
- ***Local and International Experts***

ACTIVITIES (First Year)

- **Identification of actors**
- **Establishement of strong relations with partners**
- **Coordination meetings**
- **Collection of information**
- **Field Visits**
- **Identification of problems – Elaboration of Questionnaire**
- **Experts Mission (Hydraulic and Hydrological aspects)**
- **Administrative papers (reports, TS...)**
- **Local Seminar « sharing our local vision in irrigation water management »**

RESULTS to be reached

- **Create a structured, sustainable, and strong WUA.**
- **Enhance WUA to participate to water debate (pollution, tarification..)**
- **Training water Users on Management, and water management...)**
- **Elaboration of awareness tools (films, brochures...)**



Main questions



- **Institutions???** (coop, WUA...) understand links between villages
- **Farmers opinion???** FS???
- **Water pollution**
- **Non application of water laws**
- **Which WM concept adopted by farmers???**
- **Are they ready to manage the canal???**
- **Water supply from the canal 900 is still in a trial period (water pricing!!! Savings???)**

Thank you

