

SEMIDE
EMWIS

SEMIDE

<http://www.semide.net>

Système Euro-
Méditerranéen
d'information sur les
savoir-faire dans le
domaine de l'Eau

النظام الأوروبي-متوسطي للإعلام
حول المعرفة في ميدان المياه

Eric Mino

EMWIS Technical Unit
Unité Technique du SEMIDE

EURO-MEDITERRANEAN PARTNERSHIP



EMWIS

<http://www.emwis.net>

Euro-Mediterranean
Information System on
know how in the water
sector

MEDA Water



The Euro-Med Partnership in the water sector



Barcelone'95	Euro-Mediterranean conference of Foreign Affairs Ministers <i>Creation of the Euro-Mediterranean partnership</i>
Marseille'96	Euro-Mediterranean Ministerial conference on water management <i>EMWIS creation</i>
Helsinki'97	Euro-Mediterranean Ministerial Conference on the environment <i>EMWIS taken into account</i>
Naples'97	Euro-Mediterranean conference of the 27 Water General Directors <i>Approval of EMWIS</i>
Turin'99	Euro-Mediterranean Ministerial conference on local water management <i>Approval of the Action Plan for the MEDA Water call for proposals</i> <i>Strengthening of EMWIS</i>
Madrid'01	Euro-Mediterranean conference of the Water Directors <i>Approval of EMWIS Strategic Plan for Phase II</i>
Rome'05	Euro-Mediterranean conference of the Water Directors <i>Approval of EMWIS Strategic Plan for 10 years</i>
Athens'06	Euro-Mediterranean conference of the Water Directors



OBJECTIVES OF EMWIS

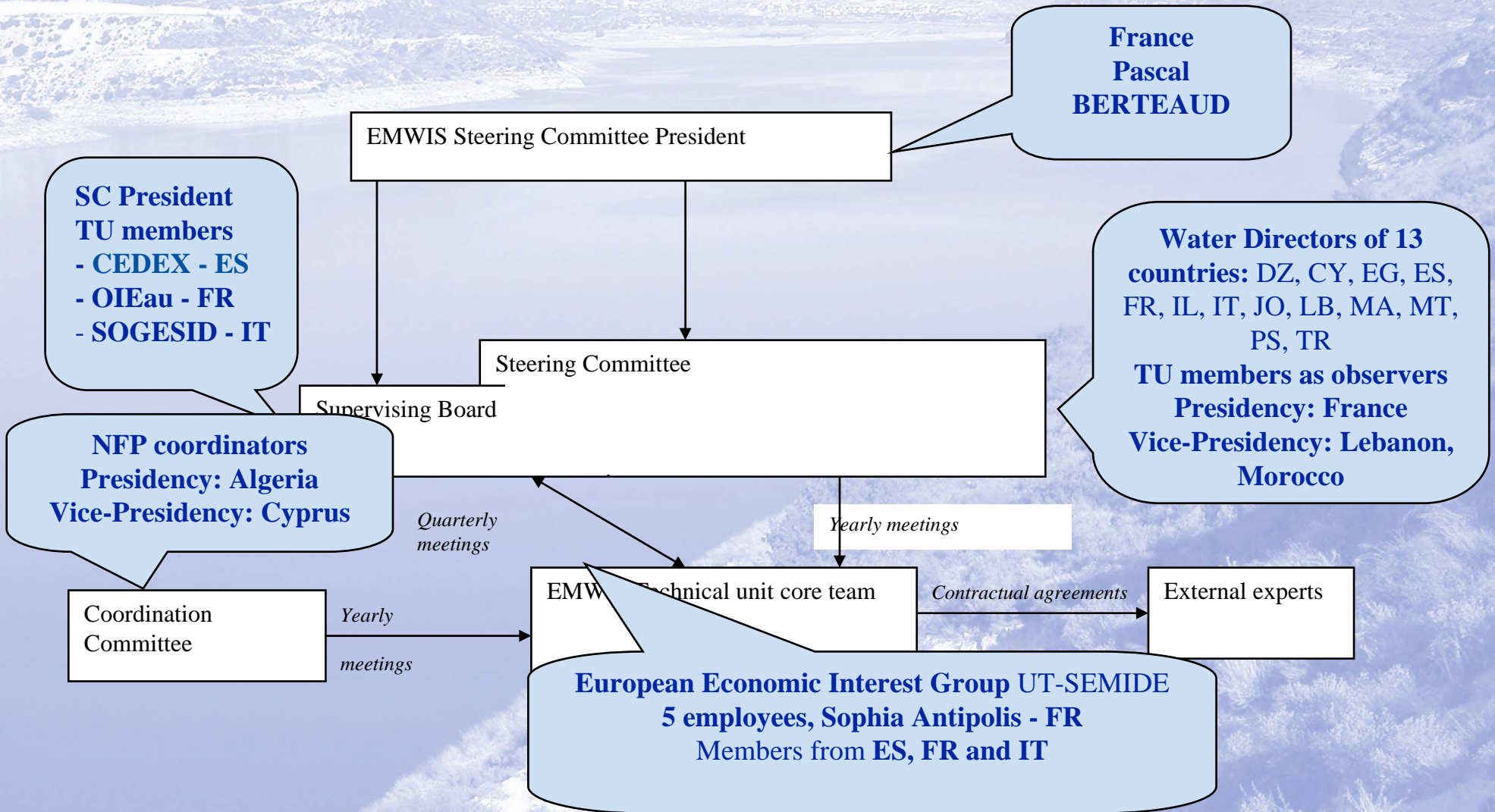
To create a tool for cooperation between the European and Mediterranean countries whose aim is to:

- **Facilitate access to the existing information** on know-how;
- **Develop the sharing of information** to enable anyone to make known his activities, his topics of interest ...;
- **Create common products and cooperation programmes** to develop available information and to promote the collection of the lacking information.

In the water sector

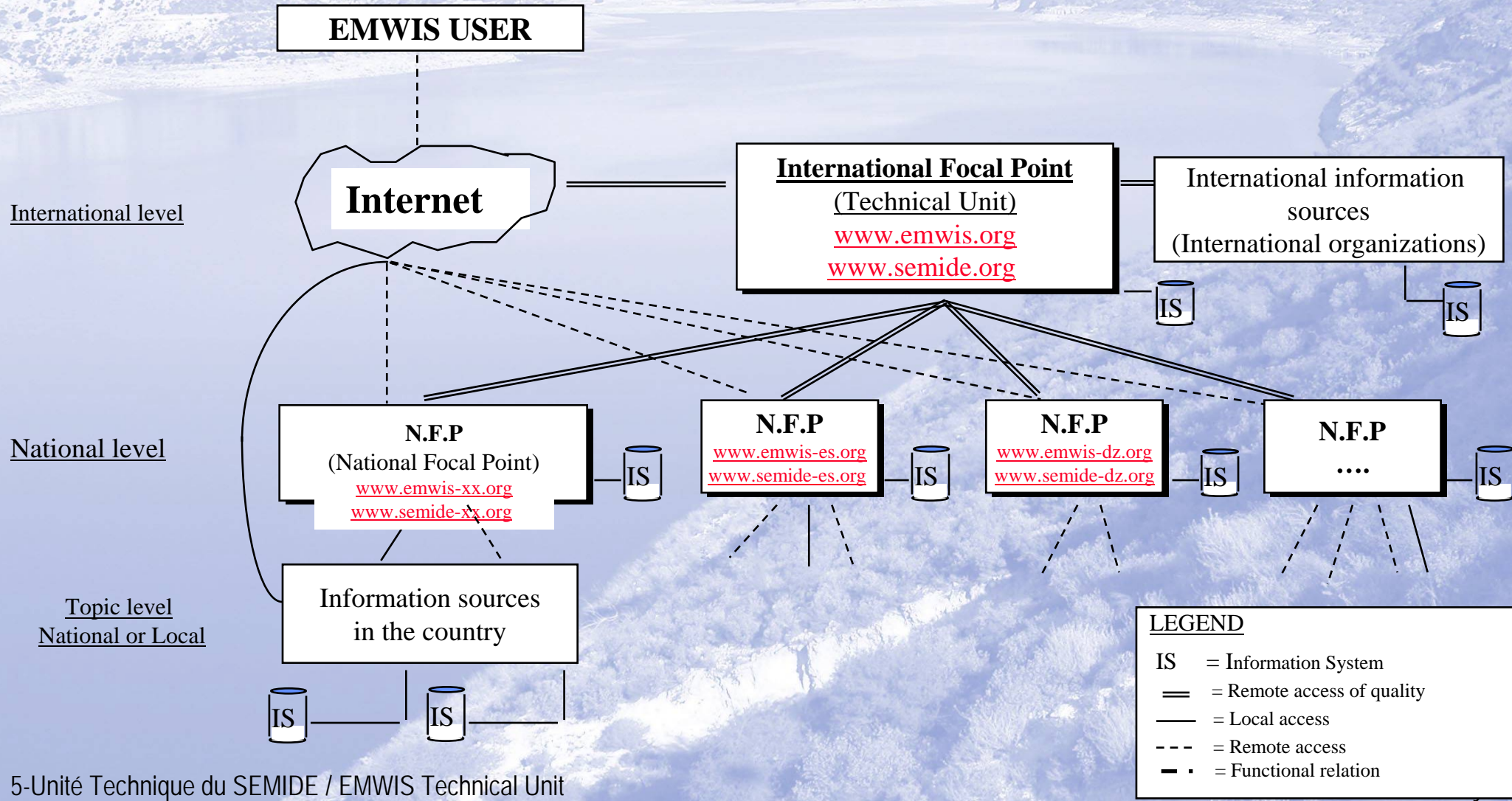


Organisational structure





EMWIS Architecture





Principle of subsidiarity

<p>European Commission and Technical Unit Countries (contractual budget) France, Italy and Spain</p>	<ul style="list-style-type: none">➤ Participation costs of non EU representatives to meetings➤ Technical assistance and training costs➤ Organization of seminars, conferences and meetings➤ Investments and running costs of the Technical Unit➤ International Focal Point➤ Specific support to NFP for international activities
<p>Countries of the Euro-Med Partnership</p>	<ul style="list-style-type: none">➤ Investments and running costs of their National Focal Point



The role of National Focal Points

- **Implementation and management of the national water information server as an EMWIS node**
- **Ensuring relations with country's users/providers**
- **Making an inventory and approving the available sources of information**
- **Agreements with information sources managers for access through EMWIS**
- **Development of common access to these information sources**
- **Information collection and implementation of the thematic directory**
- **Information brokerage**



Added value of EMWIS focal points for each country

- **The water information portal for the country**
- **The window on the country know-how in the water sector**
- **A major tool for building new collaborations**
- **A node of the Euro-Med system**

A stylized map of Europe and the Mediterranean region. The landmasses are colored in shades of yellow, orange, and red, while the sea is light blue. The map is positioned in the background of the slide.

The National Focal Points

➤ European Union: 25 countries

10 NFP created and 7 active websites

Austria, Belgium, **Cyprus**, France, Greece, Italy, Luxembourg, **Malta**, Portugal, Spain

➤ Mediterranean partners: 10 countries

10 NFP created and 9 active websites

Algeria, **Egypt**, Israel, Jordan, Lebanon, Morocco, Palestine, **Syria**, Tunisia, Turkey



Current activities

- **Capacity building for NFP**
- **Definition of common metadata to allow sharing of information**
- **Regional water information portal**
 - **New web portal based on the open source content management system used by the European Environment Agency**
 - **Multilingual water thesaurus and glossary**
 - **Database of regional water projects**
- **Information clearing house on EU regional water initiatives**
- **Thematic studies → current status**
 - **EU Water Framework Directive, Use of non-conventional water resources, Irrigation water management, Management of water and sanitation services at local level**
- **Definition of working groups → exchange of experiences**
- **Analysis of National Water Information Systems**
- **Collaboration with international initiatives in the field of water information**
 - **Feasibility study on A Mediterranean mechanism for Water observation**

Single access point to online services



you are not logged in

you are

CYPRUS FOCAL POINT



About EMWIS

EMWIS m

Home

Up

Publications

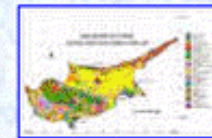
Maps



[GEOLOGICAL
MAP OF CYPRUS](#)



[HYDRO GEOLOGICAL
MAP OF CYPRUS](#)



[LAND USE OF CYPRUS](#)



[MAJOR WATER DEVELOPE](#)



[Dams of Cyprus](#)



[Table of Dams of Cyprus](#)

- Regional mechanisms
- Water sources
 - Back
 - Water Area
 - Water group
- Water inst
- Desertific
- Desalinat
- Rural Mar
- Water dat
- Water rep
- Geoscien
- Hydrology
- Satellite d

MEDA



Les ressources en eau en Tunisie

- [Introduction](#)



Action Plan 2007-2010

National water
information
Systems

Extreme
phenomena

Non conventional
water resources

sanitation &
domestic pollution

Participative
approaches

Transfer of know-how

Public Regional and National water information services

Regional and National water observation mechanism

Euro-Med Water Directors forum



Building trust and confidence

*Between countries and water stakeholders within each country
is a key part of EMWIS activity*

- **EMWIS reflects a real need and a strong demand of all the partners with an approach based on**
 - Transparency
 - Distributed management reflecting the information ownership
 - Voluntary participation
 - Level of access defined by the information owners (confidentiality)
 - Delivery of official information (validated)
- **A very powerful tool supporting the implementation of sustainable development policies in the field of water management**
 - Giving access to knowledge in the institutional, technical, and know-how fields



Thank you

➤ For additional information:

www.semide.net - www.emwis.net

Email: info@semide.org

Tel +33 492 942 290 - Fax +33 492 942 295

BP23 06961 Sophia Antipolis - France