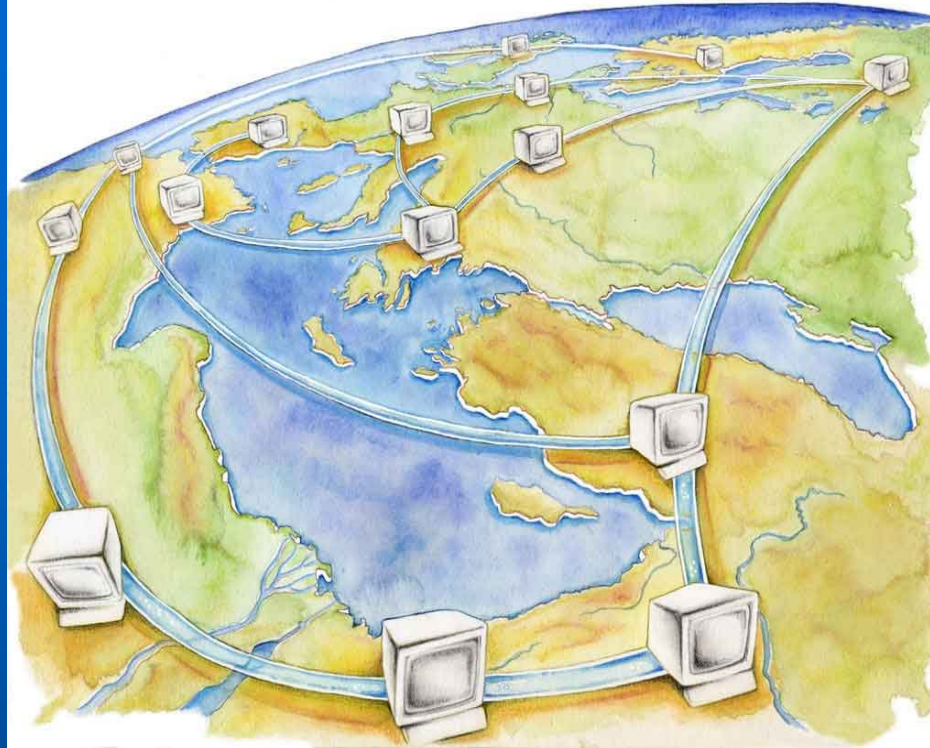


SEMIDE  
EMWIS

SEMIDE

[www.semide.net](http://www.semide.net)

Système Euro-  
Méditerranéen  
d'information sur les  
savoir-faire dans le  
domaine de l'Eau



EMWIS

[www.emwis.net](http://www.emwis.net)

Euro-Mediterranean  
Information System  
on know how in the  
water sector

النظام المعلوماتي الأورومتوسطي  
للمعرفة في مجال المياه

**Survey on water monitoring &  
programmes in Med Partner  
Countries**  
Eric MINO

EURO-MEDITERRANEAN PARTNERSHIP





# Context

- **Working group on water monitoring**
  - **Launched in July, 2007**
    - Part of the Joint Process
    - Mandate, validated in Dec'2007
    - First list of members
    - See details at: <http://www.semide.net/topics/watmon>
  - **No real activity due to the lack of funds**
- **Support from DG Env contract**
  - **Survey**
    - Status of monitoring networks in Med Countries
    - identify priorities for improving the water monitoring
  - **Working group meeting**
  - **Preliminary report**

# Time frame



<u>Launch of the survey</u>	<u>15 April 2009</u>
<u>Replies from MPC</u>	<u>30 May 2009</u>
<u>Consolidation &amp; Validation of replies</u>	<u>26 June 2009</u>
<u>Q&amp;A</u> <u>Analysis</u>	<u>14 July 2009</u>
<u>Workshop</u>	<u>End Sept. / early Oct.</u>
<u>Report preparation</u>	<u>End Nov. 2009</u>



# Survey process

- **Partnership with Aquapole (BE) for:**
  - Questionnaire design
  - Regional analysis
- **Identification of targets**
  - with NFP: MA, DZ, TN, JO, IL, LB, TR, PS
  - EMWIS TU alone: EG, SY, LY
  - Self reply: CY
- **Sending questionnaires:**
  - NFP + EMWIS TU: IL, TN, TR
  - NFP alone: LB, PS, JO, MA
  - EMWIS TU alone: EG, SY, LY, DZ, JO, MA
- **Reminders sent by EMWIS TU**



# Status of replies

<u>Countries</u>	<u>Target</u>	<u>Replies</u>	<u>Comments</u>
<u>DZ</u>	<u>9</u>	<u>3</u>	☹️
<u>EG</u>	<u>3</u>	<u>0</u>	☹️
<u>IL</u>	<u>7</u>	<u>2</u>	☹️
<u>JO</u>	<u>4</u>	<u>2</u>	☹️
<u>LB</u>	<u>6</u>	<u>4</u>	☹️
<u>LY</u>	<u>1</u>	<u>0</u>	☹️
<u>MA</u>	<u>3+</u>	<u>3+</u>	😊
<u>SY</u>	<u>2</u>	<u>1</u>	☹️
<u>PS</u>		<u>0</u>	☹️
<u>TN</u>	<u>7</u>	<u>2</u>	☹️
<u>TR</u>	<u>2</u>	<u>1</u>	😊
<u>CY</u>		<u>1</u>	😊



# Identification of gaps (1/2)

	Algeria	Egypt	Israel	Jordan	Lebanon	Libya
<b>Costal waters</b>	<b>MATET</b>		<b>Min. Env.</b>			
Rivers	ANRH		Water Authority	JVA WAJ	<b>DGRHE</b>	
Dam-reservoirs	<b>ANBT</b>			JVA WAJ	<b>DGRHE</b> ONL EPRE (2/4)	
Wetlands	<b>MATET</b>					
<b>Ground water</b>	ANRH		MoH	<b>WAJ</b>	<b>DGRHE</b>	



# Identification of gaps (2/2)

	Morocco	Pales-tine	Syria	Tunisia	Turkey
<b>Costal waters</b>	Equipment Dept Environment Dept Fondation Mohammed V			MEDD APAL MSP DHMPE	DGEM
Rivers	S3E Basin agencies		Min. irrigation	DGRE ANPE	DSI
Dam-reservoirs	S3E Basin agencies ONEP		Min. irrigation	DGRE DGBGTH SONEDE ANPE	DSI
Wetlands	S3E Eaux et forêts		Min. irrigation	DGRE ANPE	DSI Wetland dept
<b>Ground water</b>	S3E Basin agencies Health Ministry Agriculture Ministry		Min. Housing & constr.	DGRE - BIRH	DSI



Thank you  
for your attention