

# CONFERENCE OF THE WATER DIRECTORS OF THE EURO-MEDITERRANEAN AND SOUTHEASTERN EUROPEAN COUNTRIES COUNTRY REPORT: GREECE



By Anastasia Lazarou  
Hellenic Ministry for the Environment, Physical Planning and Public Works  
Central Water Agency

Athens, 6 & 7 November 2006



# River Basins

## Λεκάνες Απορροής Ποταμών (River Basins)



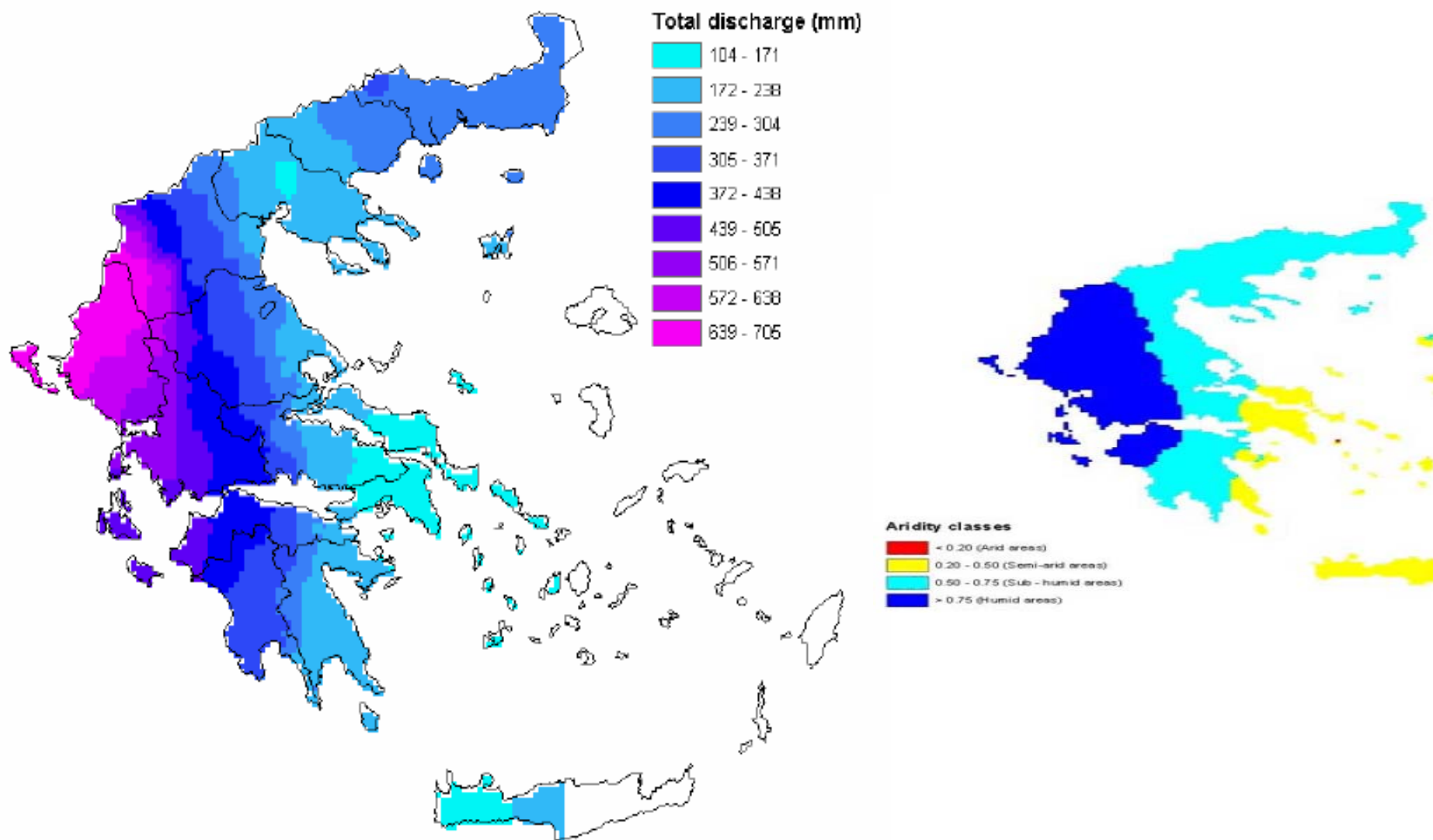
### Υπόμνημα

#### Λεκάνες Απορροής Ποταμών

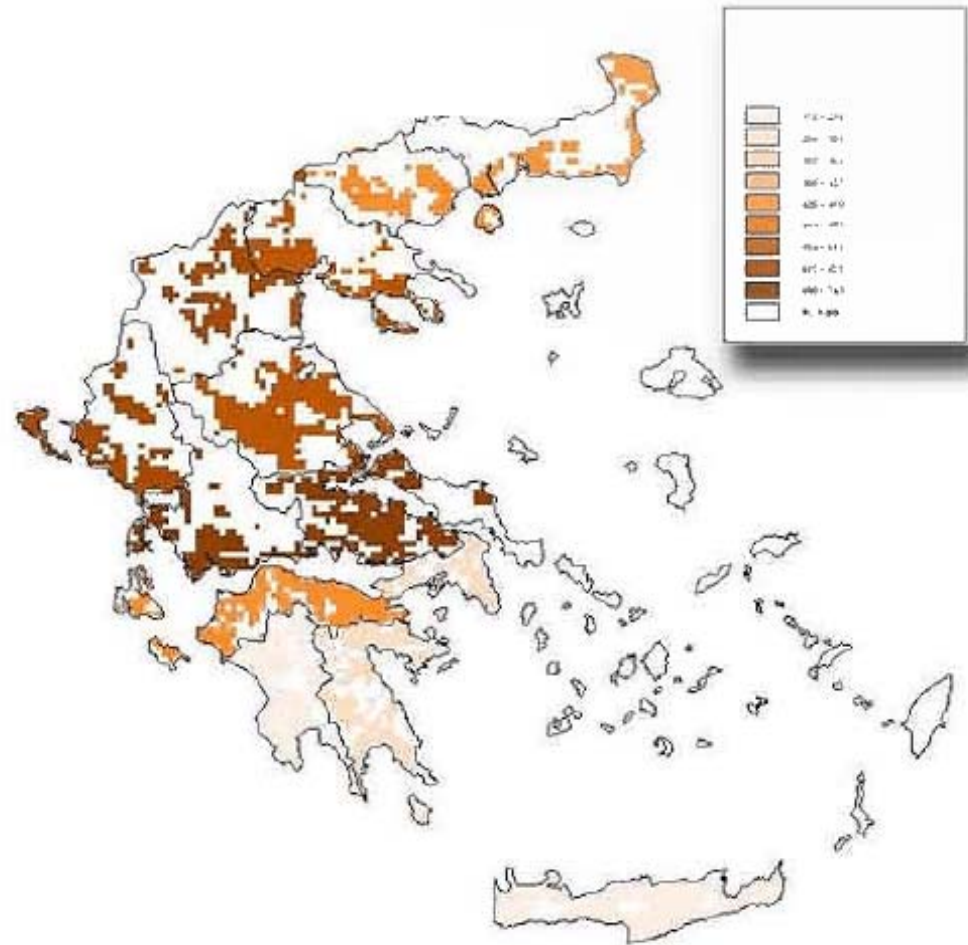
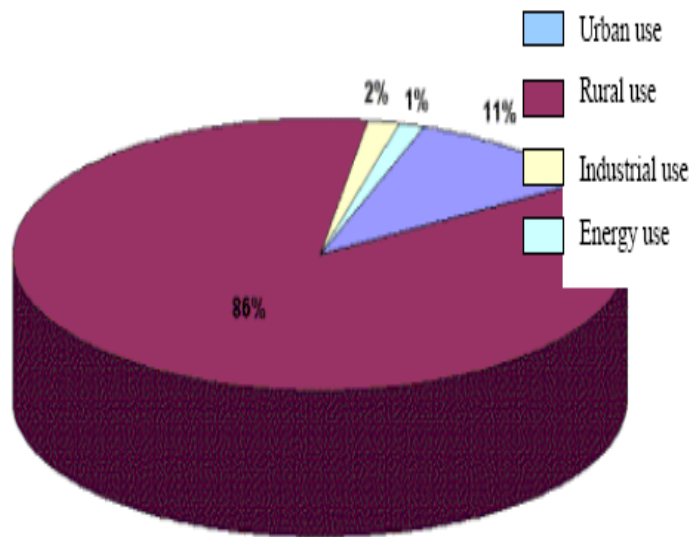
- GR01 - ΕΡΙΓΩΝΟΣ
- GR02 - ΑΛΙΑΚΜΟΝΑ
- GR03 - ΑΞΙΟΥ
- GR04 - ΓΑΛΛΙΚΟΥ
- GR05 - ΧΑΛΚΙΔΙΚΗΣ
- GR06 - ΣΤΡΥΜΟΝΑ
- GR07 - ΝΕΣΤΟΥ
- GR08 - Ρ.ΞΑΝΘΗΣ - ΞΗΡΟΠΟΤΑΜΟΥ
- GR09 - Ρ.ΚΟΜΟΤΗΝΗΣ-ΛΟΥΤΡΟΥ ΕΒΡΟΥ
- GR10 - ΡΑΒΑΝΤΟΥ -ΛΟΥΤΡΟΥ ΕΒΡΟΥ
- GR11 - ΑΔΟΥ
- GR12 - ΚΑΛΑΜΑ
- GR13 - ΑΧΕΡΟΝΤΟΣ ΚΑΙ ΛΟΥΡΟΥ
- GR14 - ΑΡΑΧΘΟΥ
- GR15 - ΑΧΕΛΩΟΥ
- GR16 - ΠΗΝΗΙΟΥ
- GR17 - ΡΑΛΜΥΡΟΥ-ΠΗΛΙΟΥ
- GR18 - ΣΠΕΡΧΕΙΟΥ
- GR19 - ΝΗΣΟΥ ΕΥΒΟΙΑΣ
- GR20 - ΕΥΗΝΟΥ
- GR21 - ΜΟΡΝΟΥ
- GR22 - ΒΑ ΠΑΡΑΛΙΑΣ ΚΑΛΛΙΔΡΟΜΟΥ
- GR23 - ΒΟΙΩΤΙΚΟΥ ΚΗΦΙΣΟΥ
- GR24 - ΑΜΦΙΣΣΗΣ
- GR25 - ΑΣΩΠΟΥ
- GR26 - ΛΕΚΑΝΟΠΕΔΙΟΥ ΑΤΤΙΚΗΣ
- GR27 - ΡΕΜΑΤΑ ΠΑΡΑΛΙΑΣ Β. ΠΕΛ/ΣΟΥ
- GR28 - ΠΕΙΡΟΥ-ΒΕΡΓΑ-ΠΗΝΗΙΟΥ
- GR29 - ΑΛΦΕΙΟΥ

- GR30 - ΟΡΟΠΕΔΙΟΥ ΤΡΙΠΟΛΗΣ
- GR31 - ΡΕΜΑΤΑ ΑΡΓΟΛΙΚΟΥ ΚΟΛΠΟΥ
- GR32 - ΠΑΜΙΣΟΥ-ΝΕΔΟΝΤΟΣ-ΝΕΔΑΣ
- GR33 - ΕΥΡΩΤΑ
- GR34 - ΚΕΡΚΥΡΑΣ - ΠΑΞΩΝ
- GR35 - ΣΠΟΡΑΔΩΝ
- GR36 - ΑΝΑΤΟΛΙΚΟΥ ΑΙΓΑΙΟΥ
- GR37 - ΚΥΚΛΑΔΩΝ
- GR38 - ΔΩΔΕΚΑΝΗΣΩΝ
- GR39 - Ρ. ΒΟΡ. ΠΑΡ. ΧΑΝΙΩΝ - ΡΕΘΥΜΝ - ΗΡΑΚΛ
- GR40 - Ρ. ΝΟΤ. ΠΑΡ. ΧΑΝΙΩΝ - ΡΕΘΥΜΝ - ΗΡΑΚΛ
- GR41 - Ρ. ΑΝΑΤΟΛΙΚΗΣ ΚΡΗΤΗΣ
- GR42 - ΘΑΣΟΥ - ΣΑΜΟΘΡΑΚΗΣ
- GR43 - ΑΘΩΣ
- GR44 - ΛΕΥΚΑΔΑΣ
- GR45 - ΚΕΦΑΛΛΟΝΙΑΣ - ΙΘΑΚΗΣ - ΖΑΚΥΝΘΟΥ

# Runoff Distribution – Indicator of Dryness

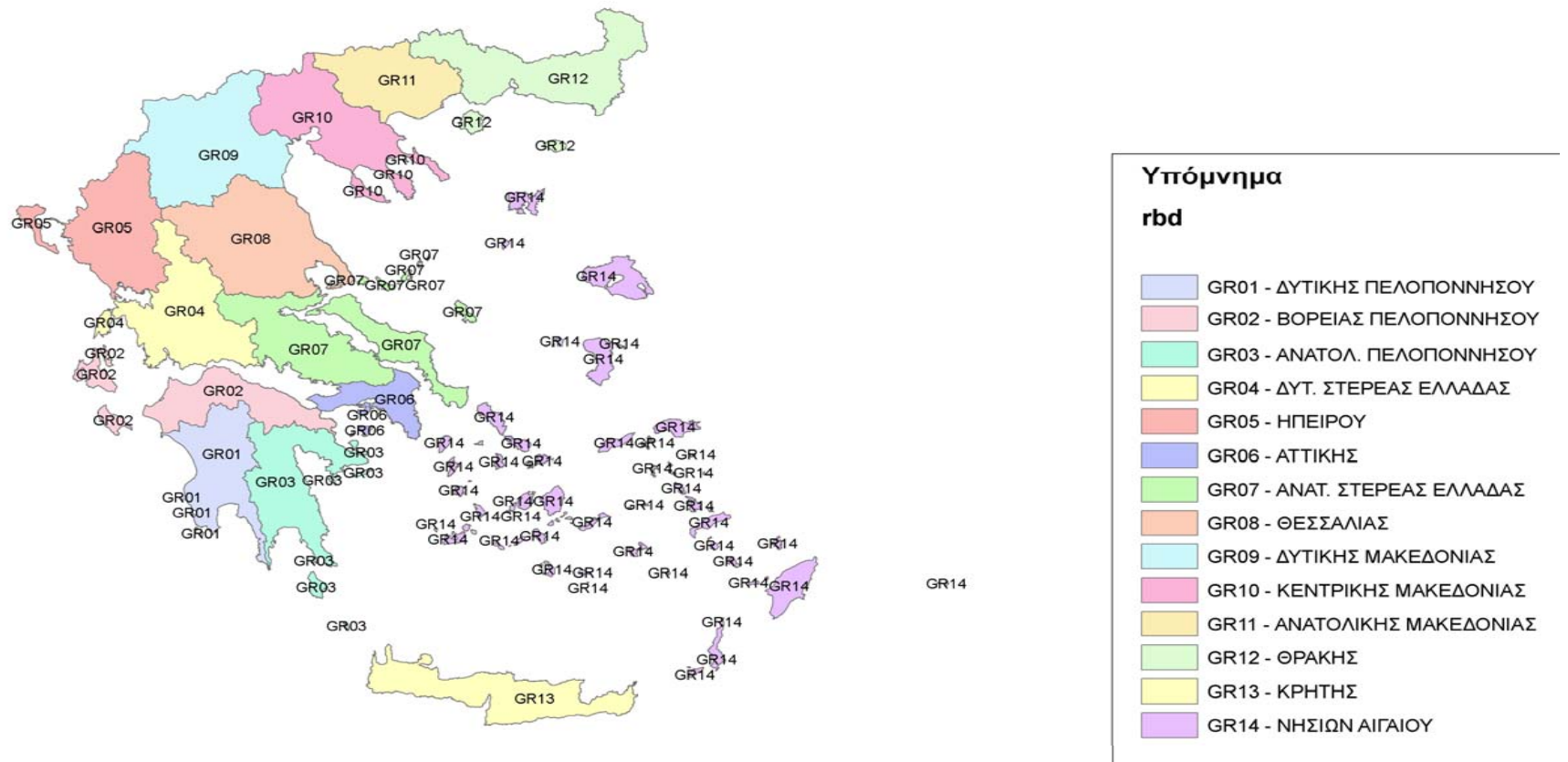


# Water Use – Distribution of Rural Water Demand



# River Basin Districts

## Περιοχές Λεκανών Απορροής Ποταμών (River Basin Districts)



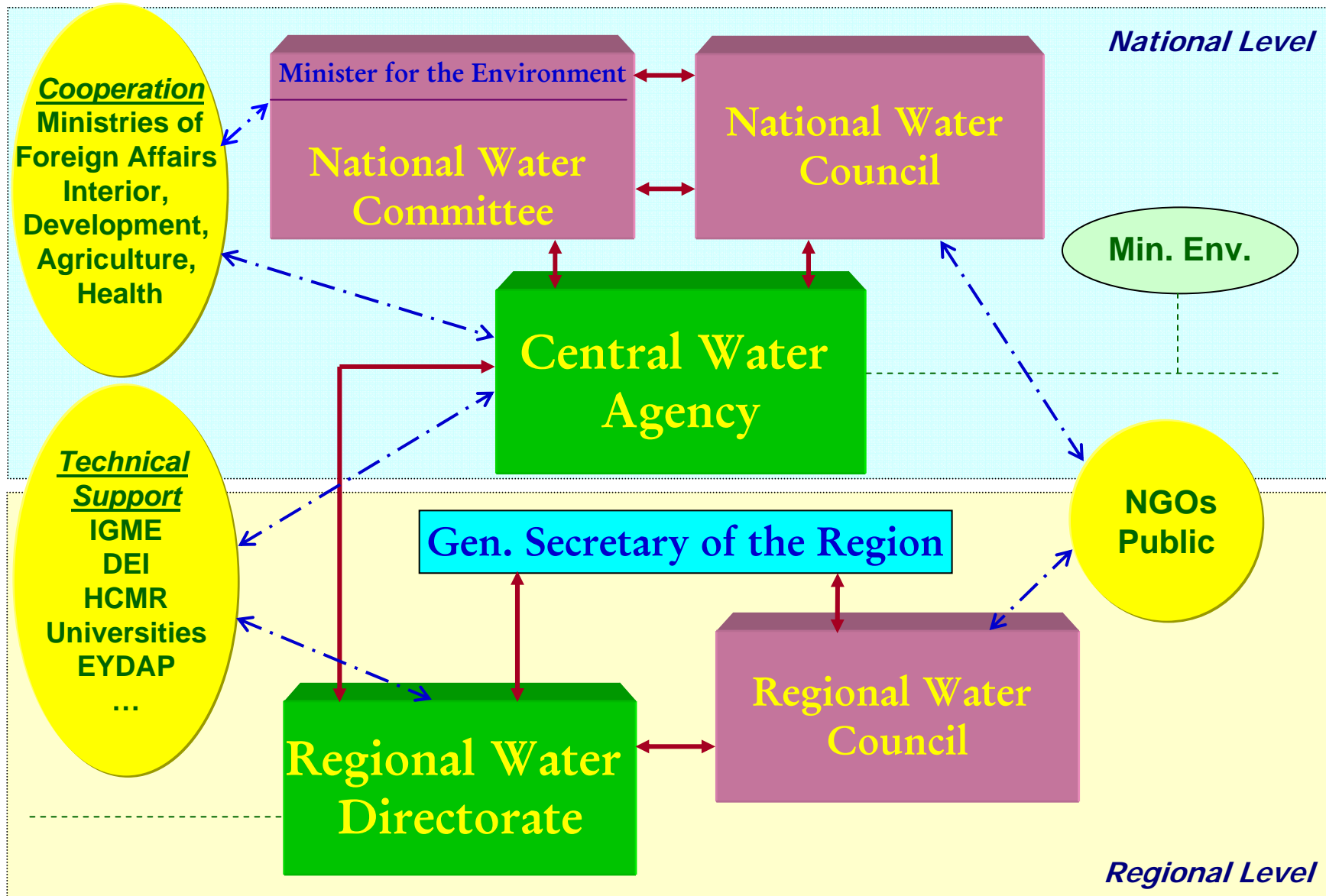


## Law 3199/2003: Transposition of the WFD

- Radical reorientation of the respective administrative capacities in Greece: identification of 13 Regional Water Directorates supervised by the Central Water Agency
- Integration of the public participation requirements of the WFD
- Innovative and holistic approach concerning water management that recognizes explicitly the ecological function of water
- Management of water on the basis of river basins
- Emphasis on the water pricing and incorporation of the polluter pays principle

# Administrative Structure

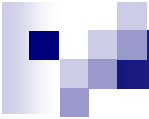
Government





## Main Challenges/Problems

- The achievement of the WFD objectives, adjusted to the particularities of the Greek region
- Limited public awareness on water issues
- Lack of sufficient qualitative & economic data
- The complicated geological structure & overexploitation of groundwater
- Practical and technical issues requiring further scientific elaboration



# National Strategy for the management of Water Resources (NSWR)

- Integrated approach for water management: Development of Management Plans on river basin level including transboundary water courses, based on water quality and quantity considerations and the interaction between surface and ground waters
- Upgrading and expansion of infrastructure
- Incorporation of socio-economic considerations in water management
- Preventive and remedial Measures: Protection of the aquatic environment of the country and promotion of remedial measures, where required